

# Flowchart for encoder

## Variables:

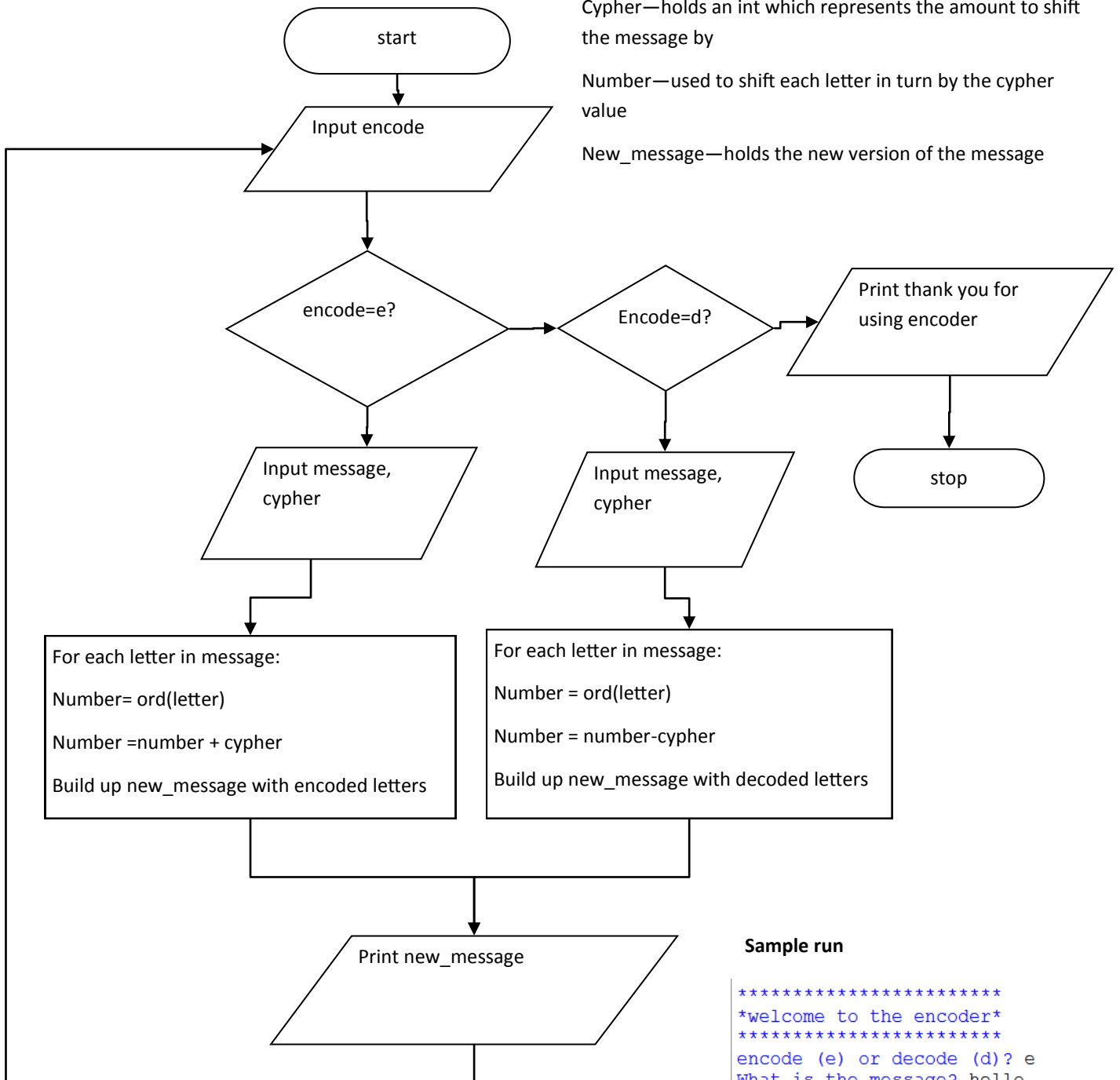
Encode—holds e or d to indicate encode or decode. Any other value stops the program

Message—holds the message to be encoded or decoded

Cypher—holds an int which represents the amount to shift the message by

Number—used to shift each letter in turn by the cypher value

New\_message—holds the new version of the message



## Sample run

```
*****
*welcome to the encoder*
*****
encode (e) or decode (d)? e
What is the message? hello
What is the cypher? 3
khour
encode (e) or decode(d)? d
What is the message? khour
What is the cypher? 3
hello
encode (e) or decode(d)? r
thank you for using the encoder
>>>
```