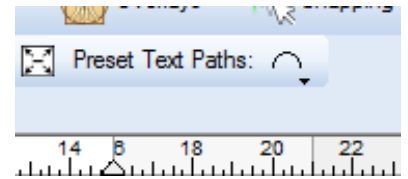


Artistic Text

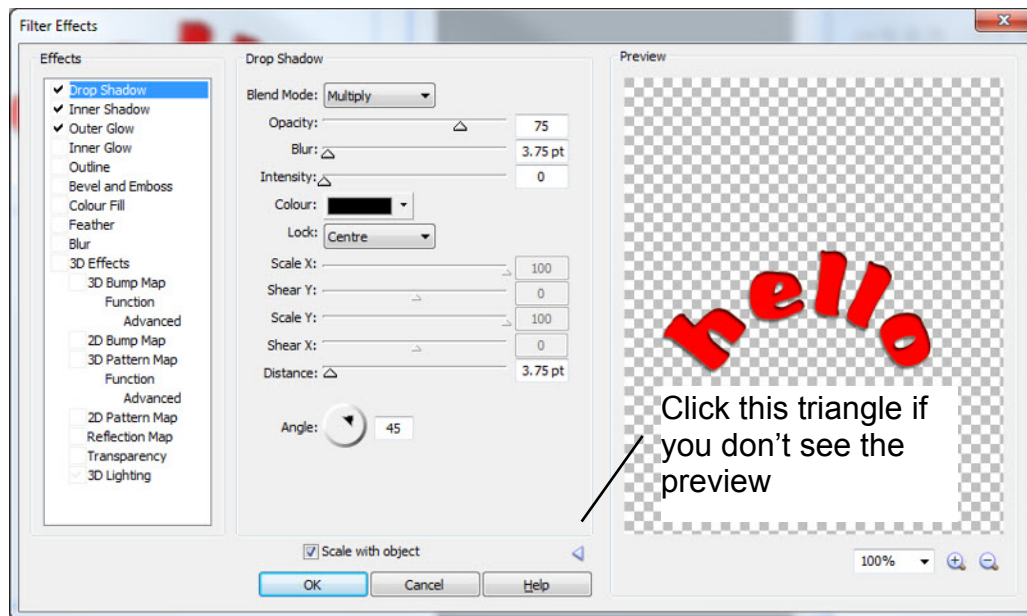
Use the artistic text tool to drag out the rough size of lettering you want. Type out your text.

Now you can highlight the text and adjust the font, size and colour as usual.

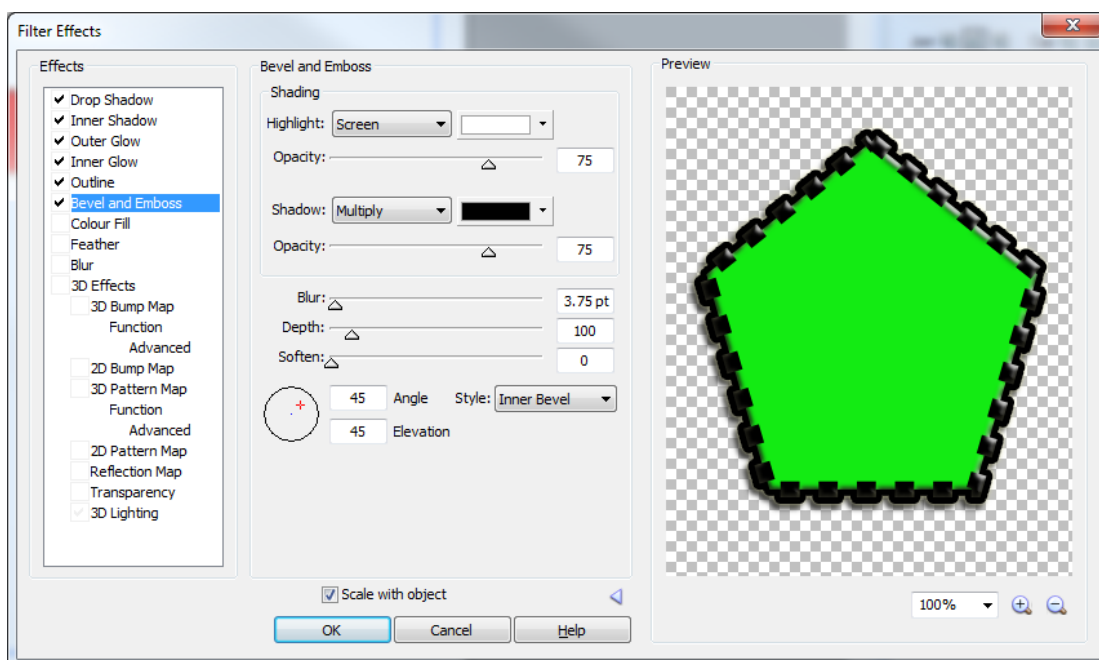


Use Preset Text Paths to curve the line of text - you can adjust the curve of the line by dragging the nodes.

Try using the special effects - click on the fx button on the left of the screen, and click the little triangle that expands the preview. Then tick different options and see what they do.

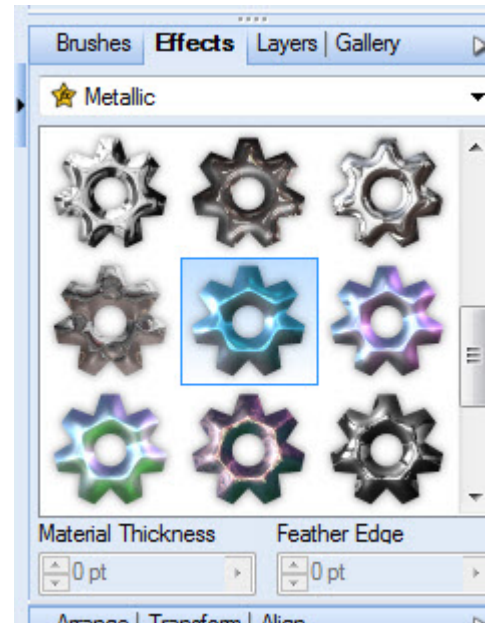
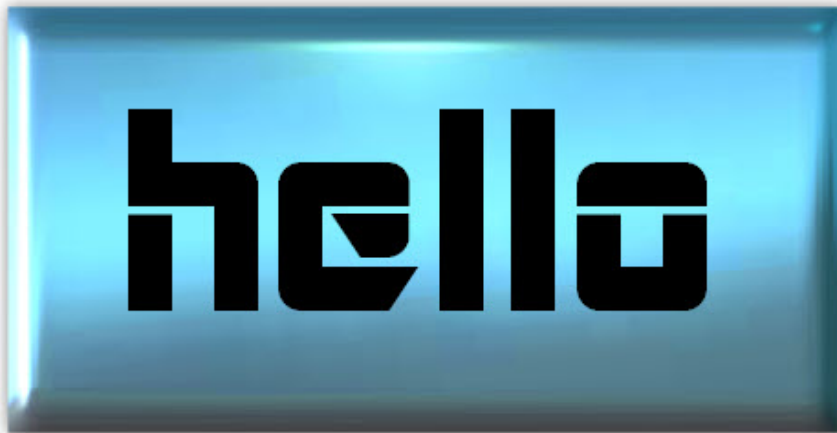


You can use these effects on shapes as well.



Lettering ideas

Create a shape and fill it with an interesting texture using the effects tab.



Use the artistic text tool to add lettering over your shape.

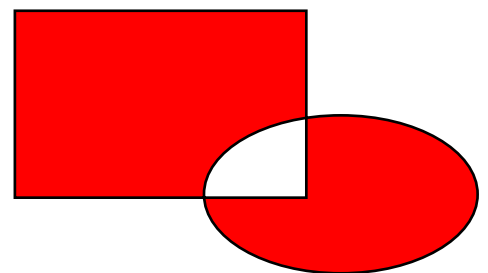
Highlight both objects by dragging round them with the arrow cursor. Right-click and select Crop.

On the FX button choose Outline.



Or make your lettering white, add inner shadow and outer glow with the FX tool and curve it using the preset text paths.

Create interesting effects by overlapping two shapes, selecting them both and then choosing combine in the Arrange tab.



Lettering examples



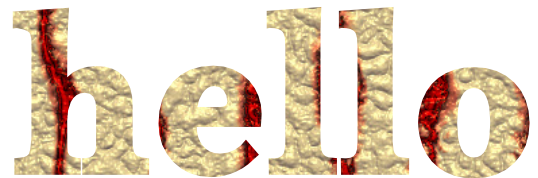
Emboss effect on lettering,
glass effect on shape



Pillow emboss effect on the
lettering, plastic effect on
background



Glass effect on background shape,
inner shadow and outer glow on white
lettering



Effect on background shape, then
shape cropped to lettering



Wood effect on shape, metal effect and
preset path on text



Glass effect on background, then
cropped to lettering



Metal effect on background shape, inner
shadow and outer glow on white lettering

